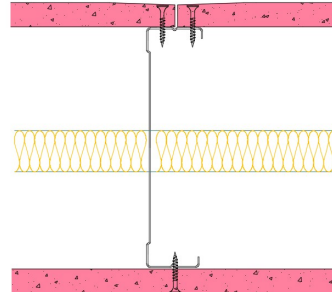


146-S-56(25) - SPEEDLINE System Data Sheet - Version V1 (24-10-23)

SPEEDLINE 146mm 'C' Stud Partition @600mm
Ctrs, with Siniat GTEC 15mm Fire Board each side,
25mm APR



System Performance Breakdown

Fire Resistance:

BS476 Part 22:1987:

Test Ref & Date or Applied Ref & Report:

Max Height:

Thickness:

Duty Grade: BS 5234: Part 2:1992:

Sound Insulation:

60/60 Minutes (Integrity/Insulation).

BTC 17443F - BRE Report P102396-1011C

Refer to Speedline Specification Clause

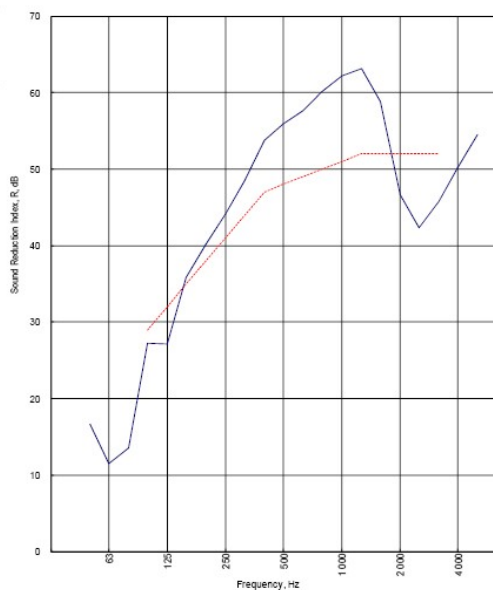
178 mm. (At Base Track, Excluding Finishes)

Heavy - Annexes A-F

48 R_w dB, Date Tested or Assessed Against - 08/07/2016

Test Code:
H19651AA
Test Date:
08/07/2016

Freq. Hz	R dB
50	16.7
63	11.5
80	13.5
100	27.2
125	27.1
160	35.9
200	40.2
250	44.2
315	48.5
400	53.8
500	55.9
630	57.7
800	60.1
1 000	62.2
1 250	63.1
1 600	58.8
2 000	46.6
2 500	42.3
3 150	45.8
4 000	50.2
5 000	54.5



Rating according to BS EN ISO 717-1:2013
 R_w (C;Ctr) = 48 (-2;-5) dB
 Max dev. 9.7 dB at 2 500 Hz
 Evaluation based on laboratory measurement results obtained by an engineering method:
 $C_{50-3150}$ = -6 dB $C_{50-8000}$ = -5 dB $C_{100-8000}$ = -1 dB
 $C_{tr,50-3150}$ = -17 dB $C_{tr,50-8000}$ = -17 dB $C_{tr,100-8000}$ = -5 dB

TESTED AT ONE OF THE UKAS ACCREDITED LABORATORIES BELOW

- B.T.C (H-Ref on Graph)
- B.R.E
- AIRO
- S.R.L

Customer: Voestalpine Metsec Plc Dry Lining

BTC 19651A: Page 11 of 14



SPEEDLINE Drywall Systems, Adsetts House, 16 Europa View, Sheffield Business Park, Sheffield, S9 1XH.

Tel: 0114 231 8030.

Email: enquiries@speedlinedrywall.co.uk

(As per the requirements set out in ISO/IEC 17025:2017 regarding test data the results stated have been carried out by voestalpine Metsec plc as part of the contract to supply Speedline Metal Sections to SIG Plc)